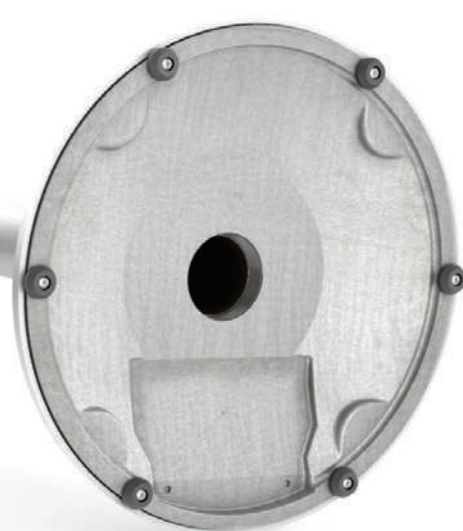


We've got you covered for any application.



Stock Coating

All of our premium cast iron sloped bases come standard with mild weather-resistant, black coating.

FEATURES

- ▶ Coated with a mild, weather-resistant standard wet paint that's not rated for outdoor use.
- ▶ The rubber pads are glued on with a super strong glue that holds up in most applications.

RECOMMENDED USE

Indoor use and occasional outdoor use when conditions are dry.

TO ORDER:

Comes standard on all premium cast iron sloped **RETRACTA-BELT®** and Classic Post + Rope stanchions.

Weather-Protect

More durable **Weather-Protect** coating is usually sufficient for most outdoor, non-coastal applications. Extended submersion could cause the glue to fail on the rubber pads, so it's best not to let these sit in puddles.

FEATURES

- ▶ The zinc paint coating covers the outside of the base to protect the cast iron from rusting.
- ▶ The rubber pads are glued on with a super strong glue that holds up in most applications.

RECOMMENDED USE

Non-coastal, non-submergible outdoor applications.

TO ORDER:

Add **SUB-WPBW** to the order below the part model number.

ULTRA Weather-Protect

Extremely durable **ULTRA Weather-Protect** is a process designed for prolonged, harsh outdoor exposure, such as an outdoor queue for a ferry terminal.

FEATURES

- ▶ The hot dip galvanized coating is a very thick and durable metal coating that encapsulates the base to prevent rusting.
- ▶ 6 round rubber feet are screwed into the base securing the pads from coming off due to delamination of the glue.

RECOMMENDED USE

Severe weather exterior use, including coastal environments and humid/wet applications.

TO ORDER:

Add **SUB-UWPBW18** for standard 18lb base or **SUB-UWPBW30** for heavy 30lb base to the order below the part model number.